

Three power switches.

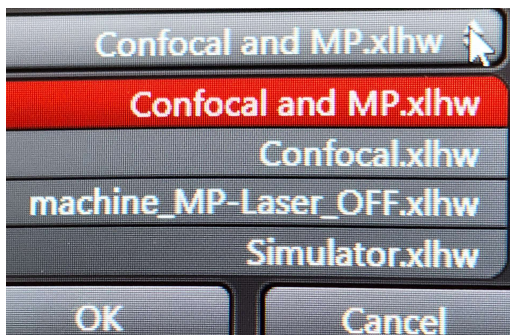
Computer should be on before powering up microscope because Windows services need to be running.

1. Power strip strapped to pillar behind monitor on right is power for computer and accessories.
2. Main control box on floor, at left top, switch marked Power.
3. Main control box on floor, at left top, switch marked Laser.

Additional power for environmental chamber and MaiTai laser discussed separately.

When Windows is connected to the confocal, green light at back of scan head green, not red.

LASX software startup asks for a configuration.



LAX automatically initializes stage on startup, so no sample on the scope!

Top left of screen, Configuration, Turn on laser.

Gear Hardware, Bit Depth 16.

Highlight detector in slider to turn on /off in lower right

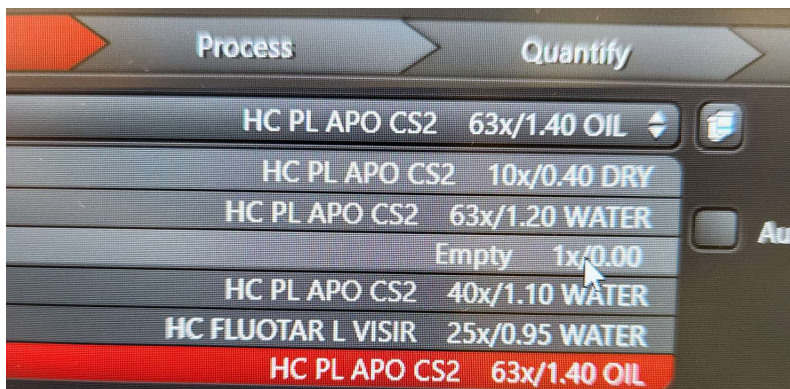
Add Laser, turn shutter on in tool with lines and bullets.

For MP and harmonics tracks, pinhole wide open.

For reflection imaging, look in AOBS settings.



Lens list. Note the lens next to the 40X is an empty position. This is because of the automated water dispenser.



Buttons on right of microscope. Press middle & top simultaneously to set focus limit. Highly recommend most users stick to the front touch screen.

=====

How To Change Lens (Staff only)

Hardware configurator to change lens.

Right click on lens to delete it.

Identify lens to add by last four digits printed on it. Search using these digits.

Double click on lens to add it.

=====

Laird chiller for WHite Light Laser needs to be topped off. Staff need to check this. *Set calendar reminder.*